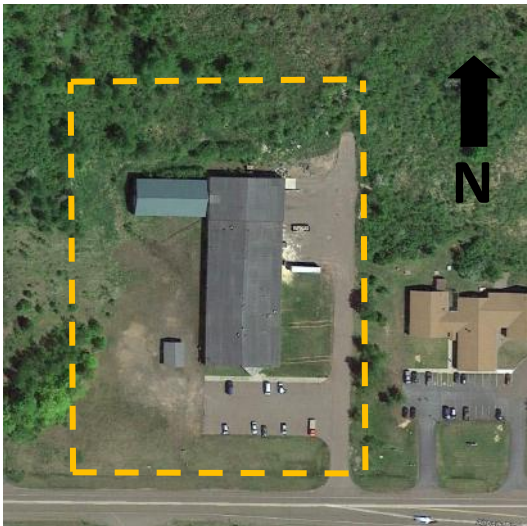


# Goodwill Building



## Site Description

*Address:* 23390 Airpark Blvd, Calumet, MI 49913

*Available Lot Size:* 4.8 Acres

*Municipal Water:* Yes

*Municipal Sewer:* Yes

*Electric Power:* Ontonagon REA

*Natural Gas:* SEMCO

*Telecommunications:* Verizon, AT&T

*Broadband:* Baraga Telephone, Spectrum Communications

*Highway Access:* M-26

*Rail Access:* No

*Commercial Air Service:* Houghton County Memorial (0 mins.) &

Sawyer International (2.5 hrs.)

*Industrial Development District:* Yes

*Price:* Negotiable

## Special Features:

Building contains 30,800 s.f. composed of 20,000 s.f. (200'x100') multispans at 12' sidewall height, the rear 6,000 s.f. (60'x100') at 16' sidewall height, clear span with 13'x15' OH door and floor level loading dock, and a 4,800 s.f. (50'x96') attached pole building at 16' sidewall height with a 14' OH door.

## For More Information

Cortney Hafer, Executive Director

Goodwill Industries

906-482-6142

[chafer@gwnwup.org](mailto:chafer@gwnwup.org)

Jeff Ratcliffe, Executive Director

Keweenaw Economic Development Alliance

902 College Ave., P.O. Box 724

Houghton, MI 49931

906-482-6817

989-350-1206 Cell

[Jeff@kedabiz.com](mailto:Jeff@kedabiz.com)

