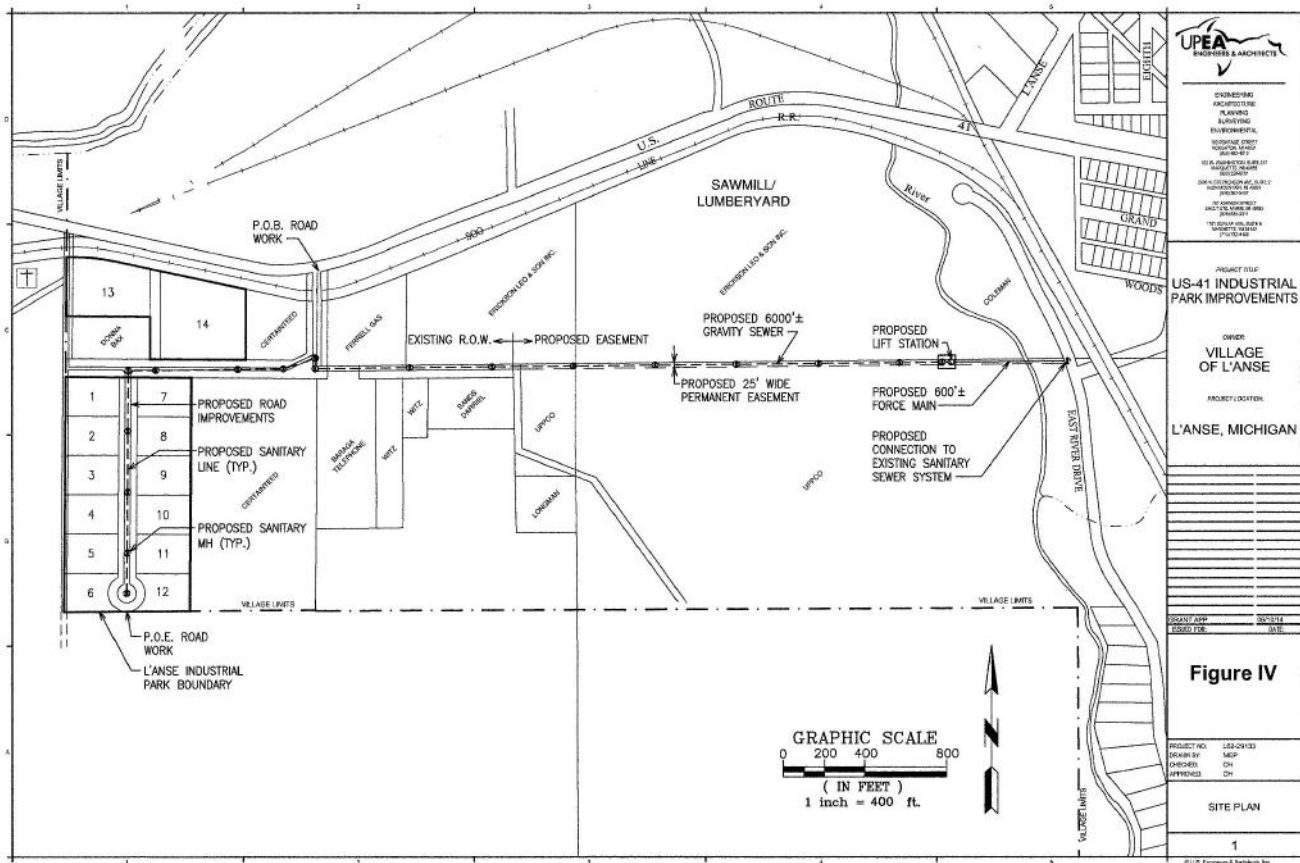


# L'Anse Industrial Park



## Site Description

Available Lot Sizes: 1, 1.5, 3, & 4.5 Acres  
 Municipal Water: 10"  
 Municipal Sewer: 8"  
 Electric Power: L'Anse Municipal Electric  
 Natural Gas: SEMCO  
 Telecommunications: Verizon, AT&T

Broadband: Baraga Telephone, Spectrum Communications  
 Highway Access: US-41  
 Rail Access: Canadian National  
 Commercial Air Service: Houghton County Memorial (51 min.) & Sawyer International (1.5 hrs.)  
 Industrial Development District: Unknown  
 Price: Unknown

## Special Features:

Park is currently under development with completion in 2018. Municipal water and sewer capacity has all been previously upgraded. L'Anse maintains a municipal electric utility with costs below UPPCO.

## For More Information

Bob LaFave, Village Manager  
 Village of L'Anse  
 101 N. Main St., P.O. Box 157  
 L'Anse, MI 49946  
 906-524-6116  
[Manager@lansemi.org](mailto:Manager@lansemi.org)

Jeff Ratcliffe, Executive Director  
 Keweenaw Economic Development Alliance  
 902 College Ave., P.O. Box 724  
 Houghton, MI 49931  
 906-482-6817  
 989-350-1206 Cell  
[Jeff@kedabiz.com](mailto:Jeff@kedabiz.com)

