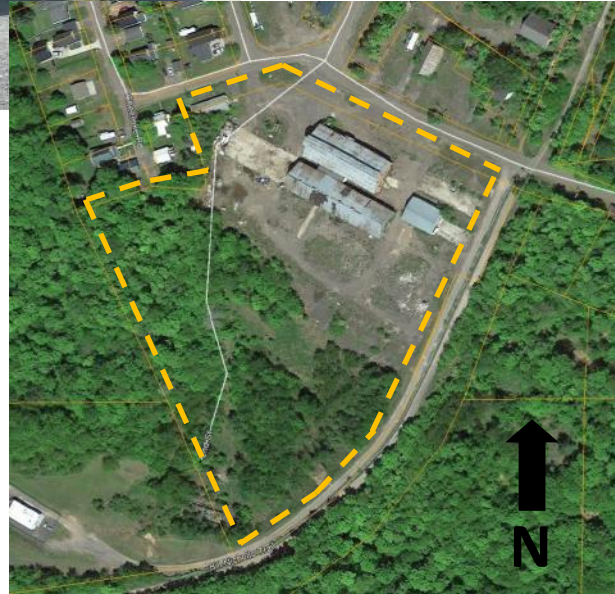


Champion #4 Machine Shop



Site Description

Address: 15331 Second St., Painesdale, MI 49955

Available Lot Size: Approximately 10 Acres

Municipal Water: Yes

Municipal Sewer: Yes

Electric Power: UPPCO

Natural Gas: SEMCO

Telecommunications: Verizon, AT&T

Broadband: Baraga Telephone, Spectrum Communications

Highway Access: M-26

Rail Access: No

Commercial Air Service: Houghton County Memorial (24 mins.) &

Sawyer International (2 hrs.)

Industrial Development District: Unknown

Price: Negotiable

Special Features:

Site contains two adjacent sandstone buildings (200'x50' & 150'x60') built circa 1902 that comprised the machine shop for the Champion No. 4 mine and a 3,000 s.f. pole building. Buildings remained in active manufacturing use until 1998 and as a scrap tire processing facility until 2012. Both buildings have overhead cranes and high ceilings. Phase I & II environmental assessment has been completed.

For More Information

Kathleen Beattie, County Treasurer

Houghton County Land Bank

906-482-0560

treasurer@houghtoncounty.net

Jeff Ratcliffe, Executive Director

Keweenaw Economic Development Alliance

902 College Ave., P.O. Box 724

Houghton, MI 49931

906-482-6817

989-350-1206 Cell

Jeff@kedabiz.com

