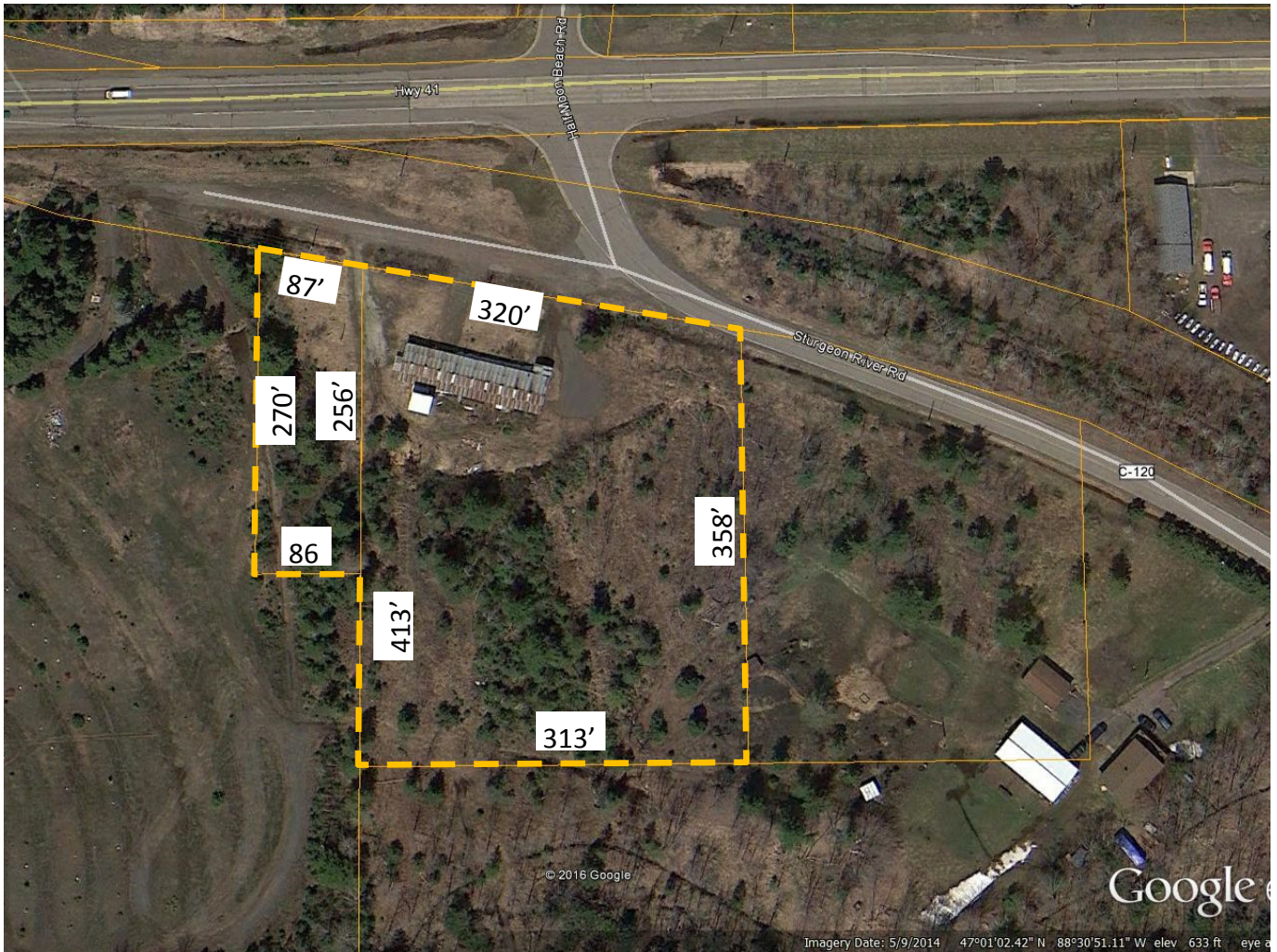


Anderson Chassell Site



Site Description

Address: 41455 Sturgeon River Rd., Chassell, MI
Available Lot Size: 3.29 Acres
Municipal Water: Yes
Municipal Sewer: Adjacent
Electric Power: UPPCO
Natural Gas: SEMCO
Telecommunications: Verizon, AT&T

Broadband: Baraga Telephone, Spectrum Communications
Highway Access: US-41
Rail Access: No
Commercial Air Service: Houghton County Memorial (15 mins.) & Sawyer International (2.5 hrs.)
Industrial Development District: Unknown
Price: \$99,500

Special Features:

Site contains a 3,600 s.f. building (120'x30') that was originally used as a foundry, later a warehouse, and finally was used as a paint shop. Site is zoned industrial and has direct access to US-41.

For More Information

Josh Stein
Northern Michigan Land Brokers
906-523-5575

Jeff Ratcliffe, Executive Director
Keweenaw Economic Development Alliance
902 College Ave., P.O. Box 724
Houghton, MI 49931
906-482-6817
989-350-1206 Cell
Jeff@kedabiz.com

